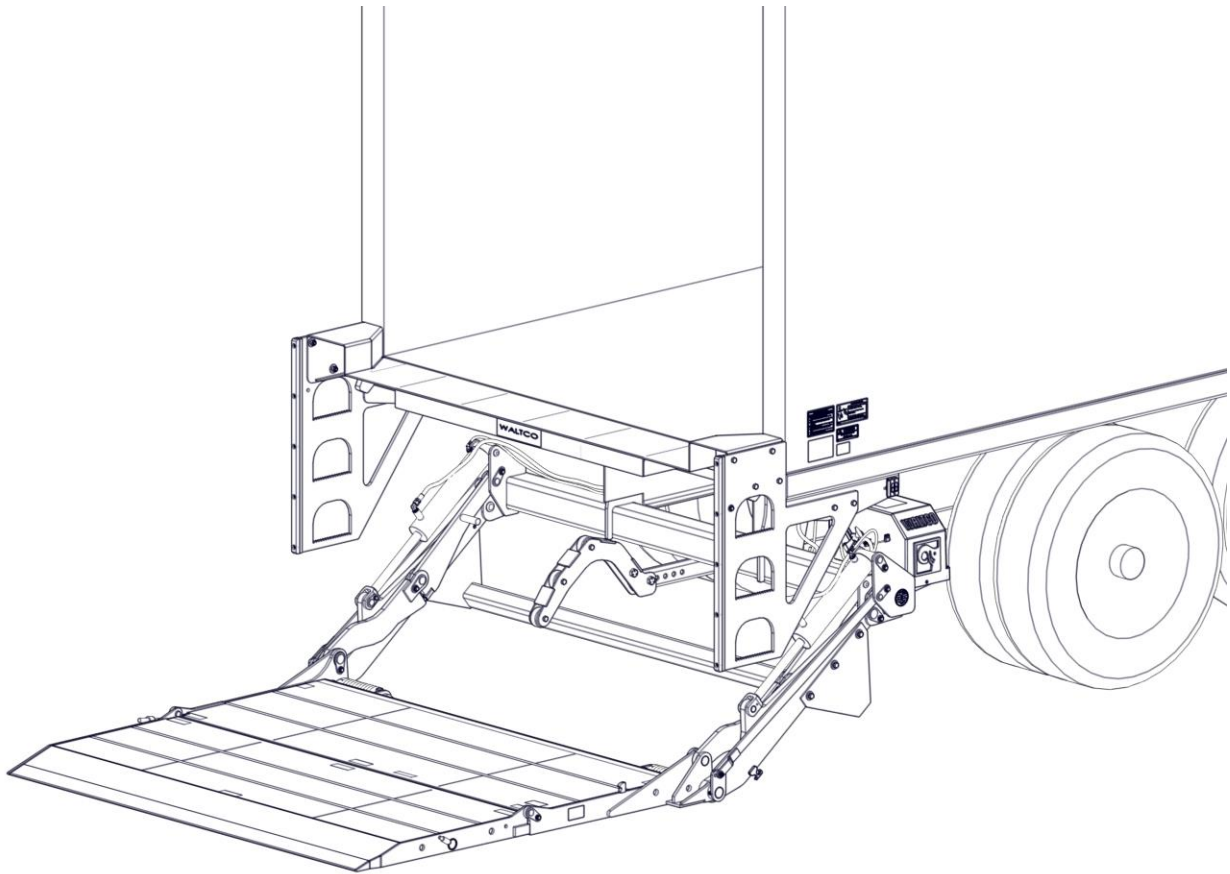


Parts Manual

WFL

2500 lb. and 3300 lb. Capacity Level Lift Flipaway Liftgates



This manual identifies parts for Liftgates manufactured:

10/2016 to Current


<i>Last Change</i>		
<i>Date</i>	<i>Page(s)</i>	<i>Description</i>
9-2016	All	Initial Release

Waltco Lift Corp.
Corporate Office United State
 285 Northeast Ave.
 Tallmadge, OH 44278
 P: 330.633.9191

Waltco Lift Corp.
United States
 620 S Hambledon Ave.
 City of Industry, CA 91744
 P: 626.964.0990

Waltco Lift Inc.
Canada
 90 North Queen St.
 Etobicoke, ON M8Z 2C5
 P: 888.343.4550

Table of Contents

	<p>Improper operation and maintenance of this liftgate could result in severe personal injury or death.</p> <p>Read and understand the contents of the owner’s manual and all warning and operation decals before operating and/or performing maintenance on this liftgate.</p>
---	---

INTRODUCTION 3

HOW TO ORDER PARTS 4

WFL MODEL INFORMATION 5

PLACEMENT OF DECALS 6

MOUNT FRAME 7

STEEL PLATFORM 8

BED EXTENSION 9

HYDRAULIC LAYOUT 10

PUMPBOX COMPONENTS 11

ELECTRICAL CONTROL OPTIONS 12

Introduction

Each Waltco liftgate is manufactured to stringent quality standards for years of reliable service. To ensure maximum performance of your Waltco liftgate, always specify and use “OEM Parts” from Waltco.

This manual does not provide procedures for the servicing and repair of Waltco liftgates. Service and repair should only be performed by an authorized Waltco distributor. For information on the nearest authorized Waltco distributor contact:

Waltco Lift Corp.

285 Northeast Avenue

Tallmadge, OH 44278

Phone: 800.411.5685

Fax: 800.411.5684

E-mail: parts@waltco.com



The use of non-standard or makeshift parts can be extremely hazardous and result in serious injury or death.



Every vehicle that has a WALTCO Liftgate must have legible WARNING AND OPERATION DECALS clearly posted on the vehicle and an OWNER'S MANUAL in the vehicle at all times as a guide for proper operation and maintenance.

How To Order Parts

Repairs should be made only by authorized mechanics using WALTCO Replacement parts.

When ordering repair or replacement parts, please include all the information asked for below. If this information is not available, a complete written description or sketch of the required part will help WALTCO identify and deliver the needed part to you.

THE FOLLOWING INFORMATION MUST BE INCLUDED:

1. SERIAL NUMBER - [WALTCO liftgate serial numbers can be found on the Specification Tag attached to the mount frame. (On older units the Specification Tag is located on the side or bottom of the platform.)]
2. MODEL NUMBER - [Or capacity]
3. PLATFORM SIZE

THEN INCLUDE THE FOLLOWING INFORMATION:

4. PART NUMBERS
5. DESCRIPTION
6. QUANTITY REQUIRED

MAIL, E-MAIL OR PHONE YOUR REQUEST TO:

Waltco Lift Corp
285 Northeast Avenue
Tallmadge, OH 44278
1-800-411-5685
FAX: 1-800-411-5684
E-MAIL: parts@waltco.com

ALL PARTS ARE F.O.B. FROM THE SHIPPING FACTORY

PLEASE NOTE:

To assure you of continuing and effective quality control, our warranty policy permits replacement of hydraulic cylinders, valves and motor pump units when their factory seals are intact. Parts under warranty will be exchanged promptly after careful inspection of the returned assemblies.

WFL Model Information

Explanation of Specification Tag

Model Name	Description	Capacity
WFL	Dual Cylinder	2500 lb.
WFL	Dual Cylinder	3300 lb.

MODEL NAME

RATED CAPACITY

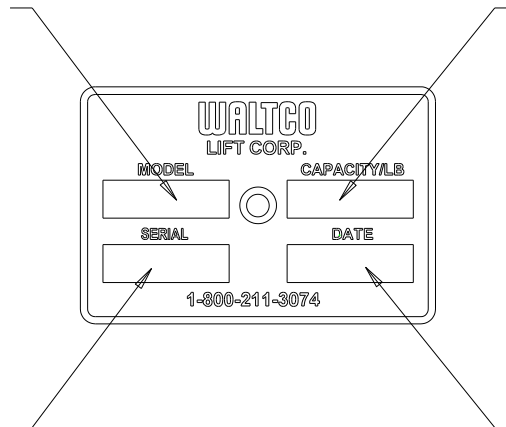
Based on an evenly

SERIAL NUMBER

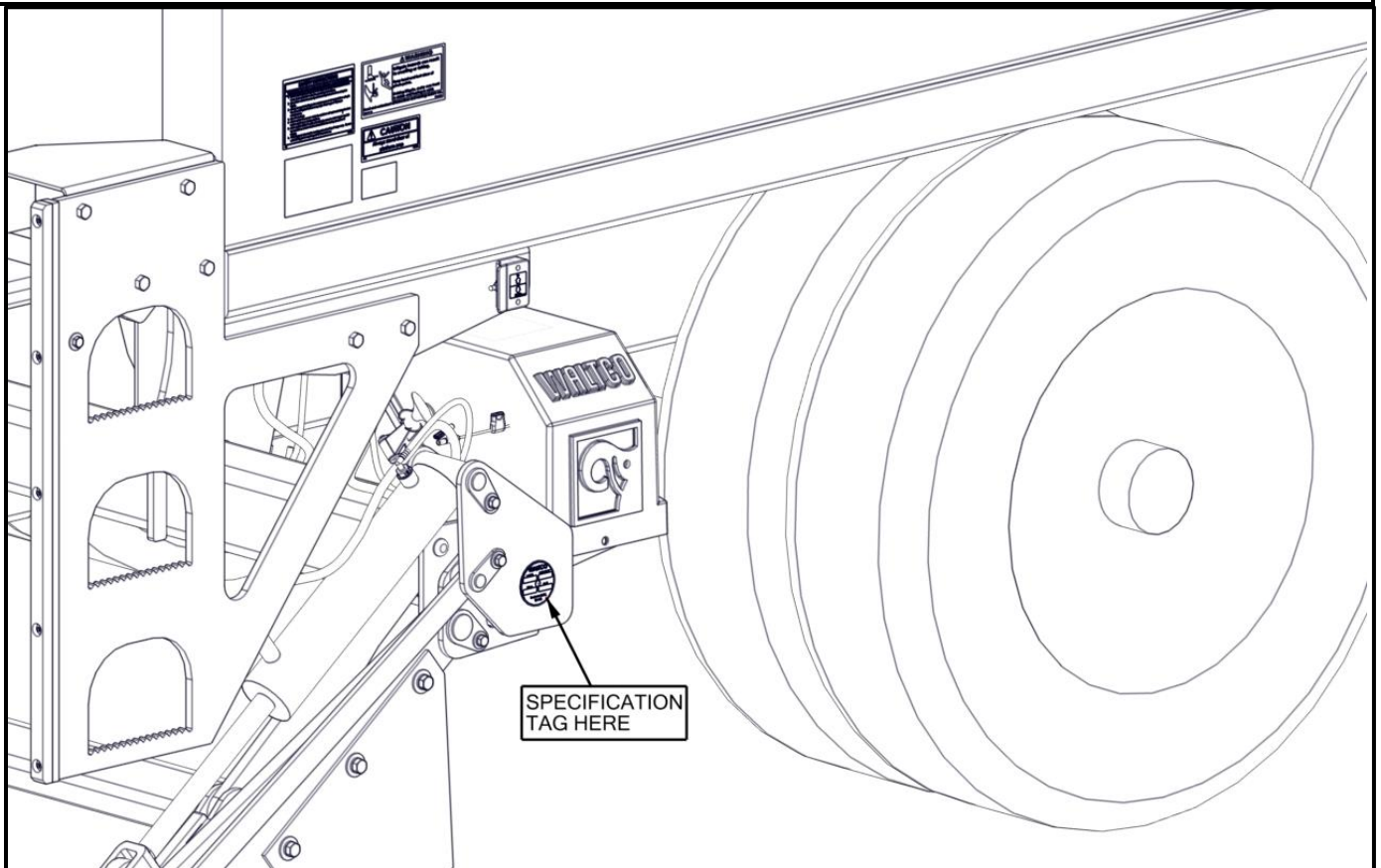
of liftgate. To be used
when ordering parts or

DATE OF MANUFACTURE

Month / Year




GR00241

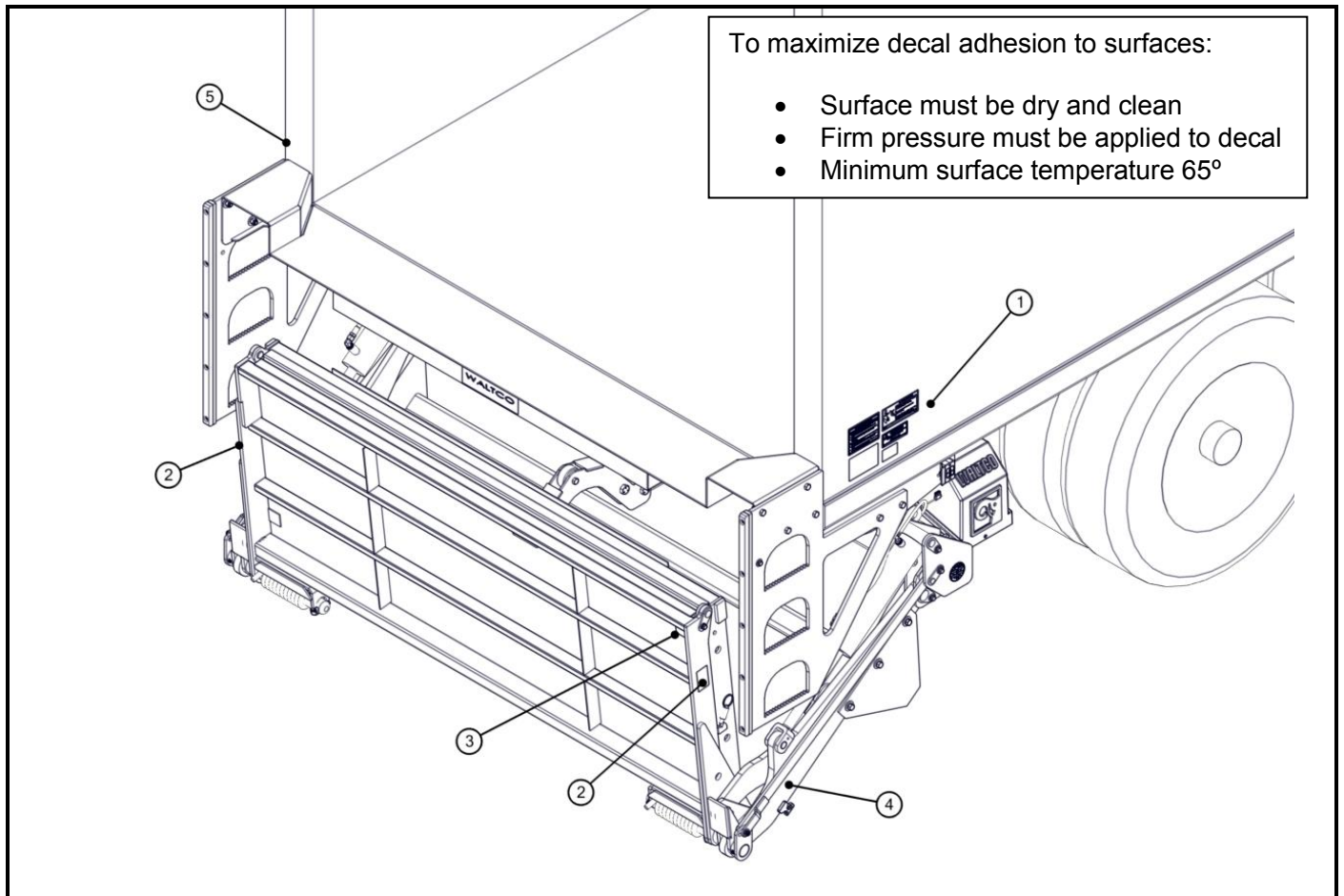


Placement of Decals

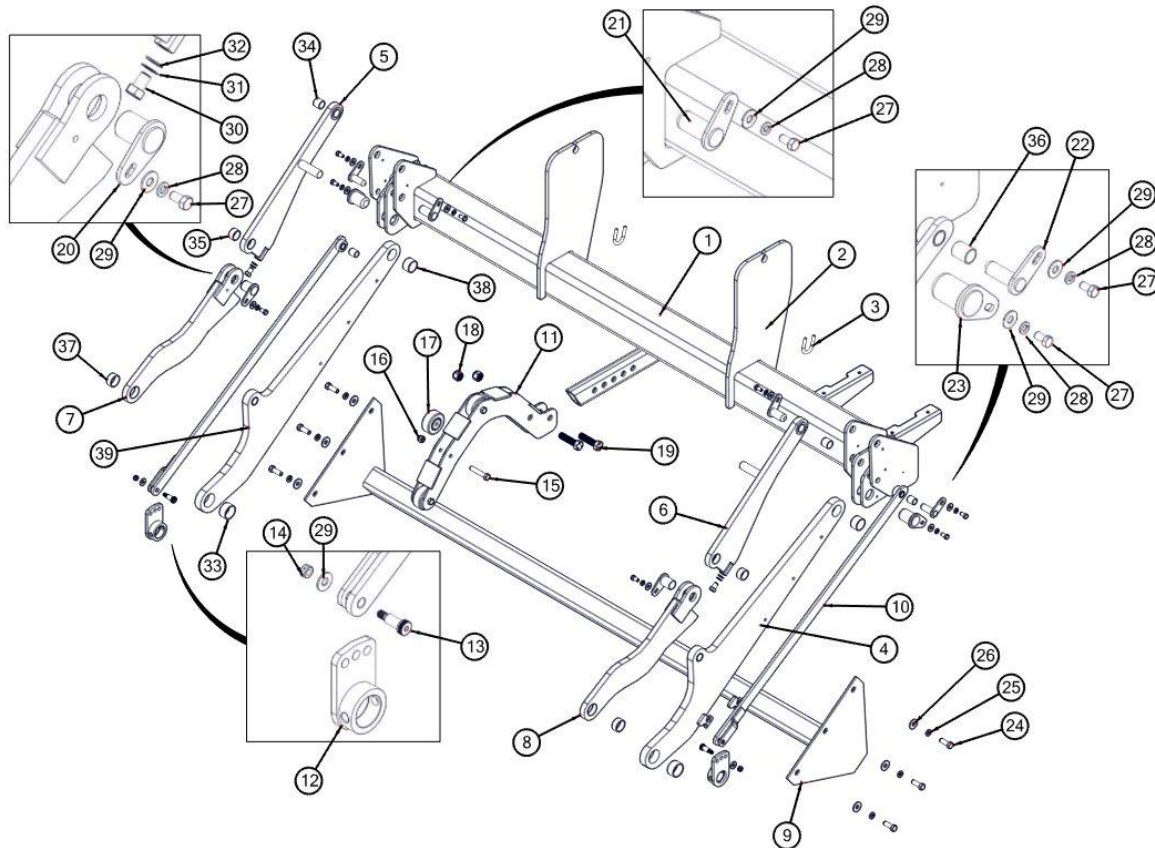


All decals must be in place and legible or all warranties are void.

ITEM	DECAL	QTY	PART NO.	LOCATION
1	Safety Instructions	1	80100850	Locate in a conspicuous place near controls.  If your liftgate is equipped with dual controls, an additional Safety Instruction decal (80100850) is to be placed in a conspicuous place near the second set of controls. Refer to the following diagram showing decal locations.
	Operation	1	80101528	
	Hazard Decal	1	80101370	
	Important Decal	1	80100828	
	Stand Clear	11	75089296	
	Stand Clear Decal	1	75089296	
2	Capacity Decal – 2500 lb	1	80100255	Locate on curbside of platform (Position so as to be read when platform is open)
	Capacity Decal – 3300 lb	1	80100585	
3	Stand Clear Decal	1	75089296	Locate near platform handle (Positioned so as to be read when platform is being unfolded into loading position)
	Capacity Decal – 2500 lb	1	80100255	
	Capacity Decal – 3300 lb	1	80100585	
4	Transit Chain Decal	1	80101517	Locate on back of deck on curbside (Visible when platform is stored)
5	Stand Clear Decal	1	75089296	Locate on driver's side of vehicle body near liftgate

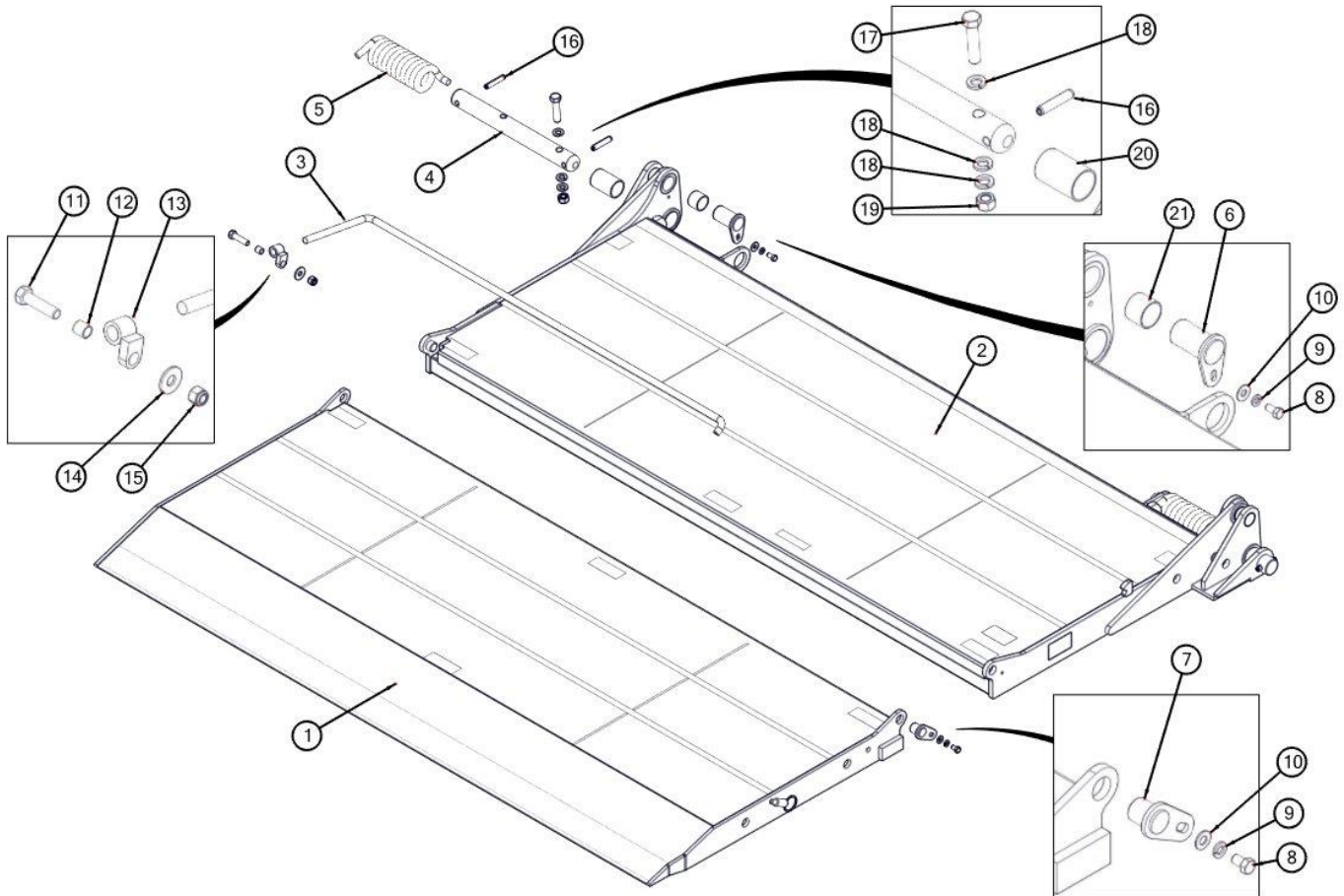


ITEM	PART NUMBER	QTY	DESCRIPTION
1	21620000	1	MOUNT TUBE ASSEMBLY
2	21670101	2	MOUNT PLATE
3	26470201	2	U BAR
4	21630010	1	LIFT ARM WELDMENT CURB SIDE
5	21656051	1	UPPER PARALLEL ARM ASSEMBLY DRIVER SIDE
6	21656001	1	UPPER PARALLEL ARM ASSEMBLY CURB SIDE
7	21656151	1	LOWER PARALLEL ARM ASSEMBLY DRIVER SIDE
8	21656101	1	LOWER PARALLEL ARM ASSEMBLY CURB SIDE
9	21614000	1	UNDER RIDE BUMPER WELDMENT
10	21657001	2	SPRING ARM ASSEMBLY
11	21692001	1	PARTING BAR ASSEMBLY
12	21657300	2	ADJUSTABLE SPRING LINK WLEDMENT
13	75087571	2	SOCKET HEAD SHOULDER SCREW 1/2 X 1 W/ 3/8-16 TREAD
14	75085188	2	CENTERLOCK NUT, 3/8-16
15	7500010-14	3	HEX BOLT, 1/2-13 X 2.75, GR 5
16	75085162	3	LOCK NUT, 1/2-13, NYLON
17	75081348	3	ROLLER
18	75085186	2	HEX NUT, 3/4-10, NYLOCK, GR 2
19	75086184	2	HEX BOLT, 3/4-10X3, GR 5, FULLY THREADED
20	1000021-15	2	PIN WELDMENT, 1.25DIA X 1.875L
21	1000021-17	2	PIN WELDMENT, 1 DIA X 2.5
22	1000021-16	2	PIN WELDMENT .75 DIA X 2.5
23	1000021-14	2	PIN WELDMENT, 1.5 DIA X 2.5
24	7500010-14	6	HEX BOLT, 1/2-13 X 2.75, GR 5
25	75088083	6	LOCK WASHER, 1/2"
26	75088056	6	FLAT WASHER, 1/2" X 1-3/8"OD X .109THK
27	7500010-14	8	HEX BOLT, 1/2-13 X 2.75, GR 5
28	75088081	8	LOCK WASHER, 3/8"
29	75088056	14	FLAT WASHER, 1/2" X 1-3/8"OD X .109THK
30	75086109	2	HEX BOLT, 1/2-13 X 0.75, GR 5
31	75088072	2	WASHER, .51 ID X .88 OD X .03, PLATED
32	75088071	2	WASHER, .51 X .88 X .06, PLATED
33	21699001	2	BUSHING, FIBERGLIDE, 1.75"ID X 1"
34	21699003	2	BUSHING, FIBERGLIDE, 1.5"ID X 1"
35	21699005	2	BUSHING, FIBERGLIDE, 1.25"ID X 0.75"
36	21699007	2	BUSHING, FIBERGLIDE, 0.75"ID X 1"
37	21699008	4	BUSHING, FIBERGLIDE, 1.5"ID X 0.75"
38	21699004	2	BUSHING, FIBERGLIDE, 1"ID X 1"
39	21630001	1	LIFT ARM ASSEMBLY



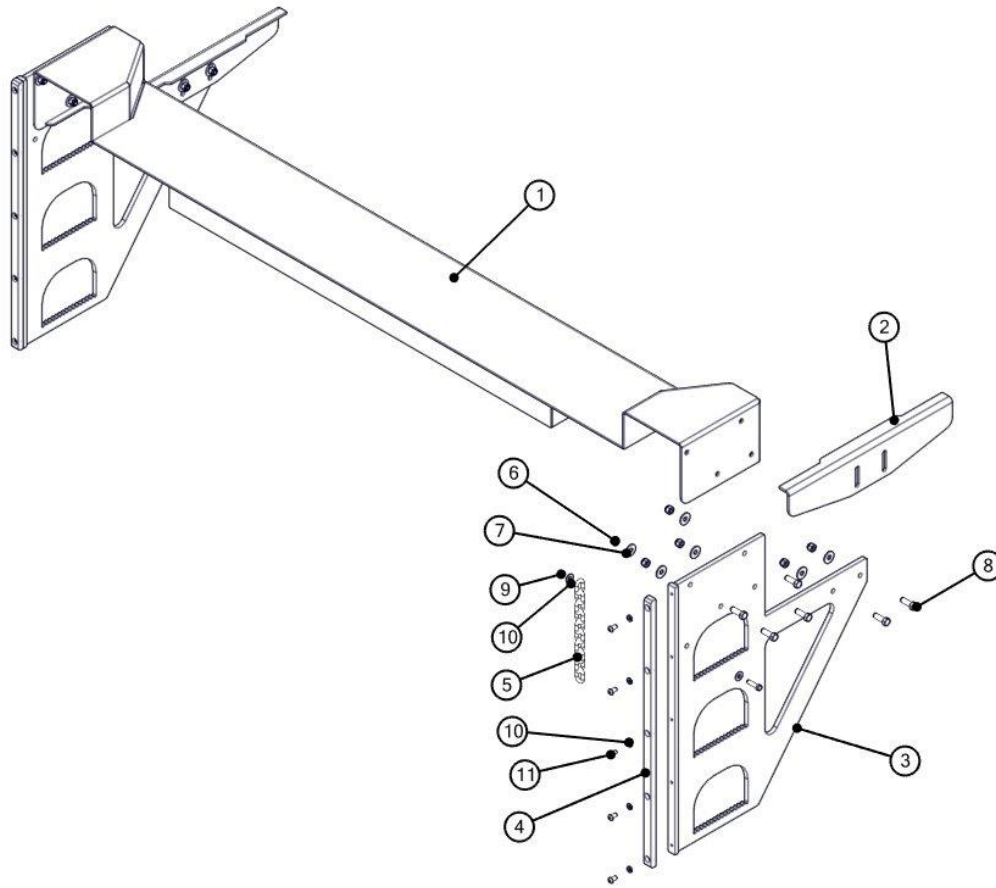
MOUNT FRAME ASSY, 2500 & 3000 LBS CAPACITY

ITEM	PART NUMBER	QTY	DESCRIPTION
1	21613001	1	DECK EXTENTION ASSEMBLY 58X82+10
2	21611001	1	MAIN DECK ASSEMBLY 58X82+10
3	21617100	1	TORSION BAR
4	21612101	2	DECK PIN 1.75X16.88
5	21612002	2	DECK HINGE SPRING
6	1000021-20	2	PIN WELDMENT 1.5 DIA X 2.94
7	1000021-21	1	PIN WELDMENT, 1 DIA X 1.38
8	7500010-15	3	HEX BOLT, 3/8-16 X .625, GR 8
9	75088081	3	LOCK WASHER, 3/8"
10	75088053	3	FLAT WASHER, 3/8" X 1"OD X .083THK
11	7500010-18	1	HEX BOLT, 1/2-13 X 2.0, GR 8
12	21614501	1	TUBE, SS, .625"OD X .527"ID X .625"LG
13	21617301	1	TORSION BAR ANCHOR
14	75088056	1	FLAT WASHER, 1/2" X 1-3/8"OD X .109THK
15	75085162	1	LOCK NUT, 1/2-13, NYLON
16	75089602	4	COILED PIN
17	7500010-7	2	HEX BOLT, 5/8-11 X 2.75, GR 8
18	75088085	6	LOCK WASHER, 5/8"
19	75085012	2	HEX NUT, 5/8-11. PLATED
20	21612513	2	SLEEVE, Ø 2.5 X 3.00
21	21699006	2	BUSHING,FIBERGLIDE,1.5"IDX1.25"



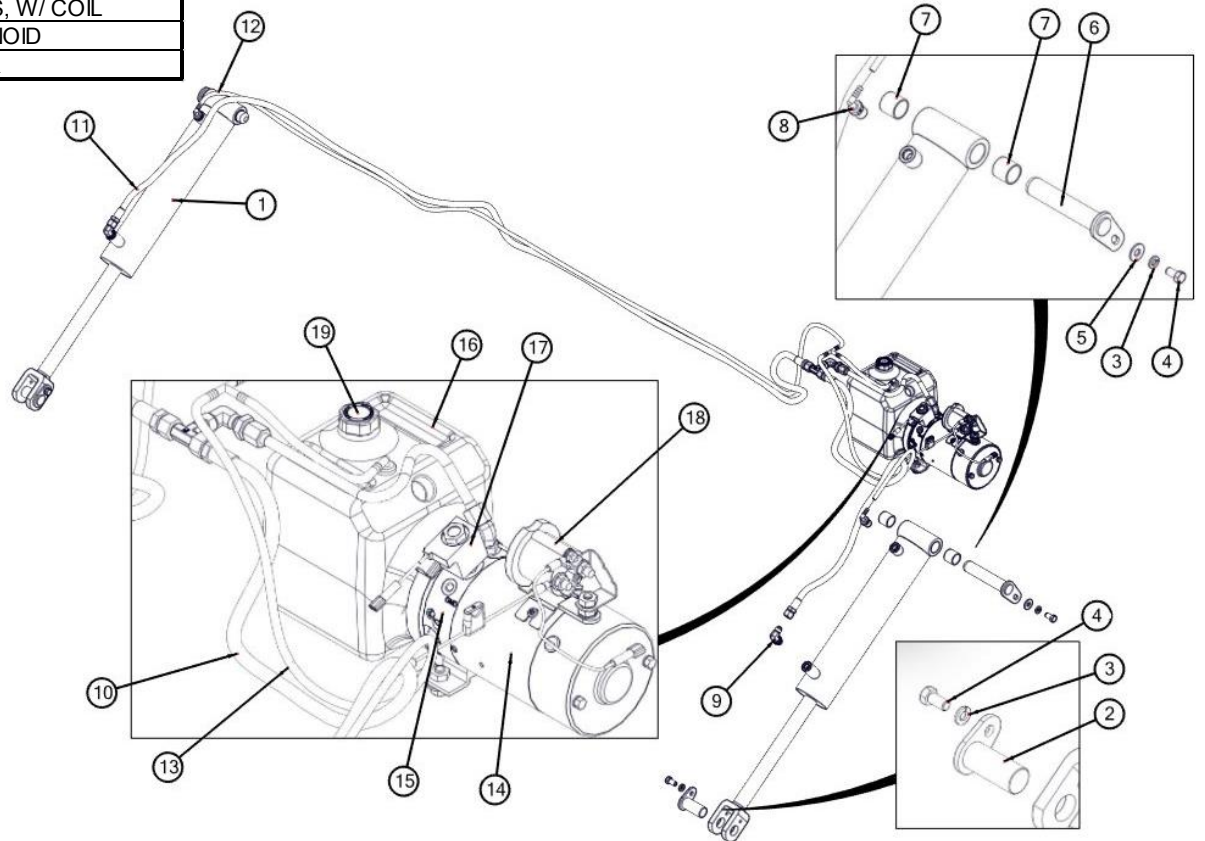
STEEL PLATFORM ASSEMBLY

ITEM	PART NUMBER	QTY	DESCRIPTION
1	21660001	1	BED EXTENSION ASSEMBLY
2	21697200	2	DOCK BUMPER MOUNTING BRACKET
3	21697500	2	DOCK BUMPER
4	21697300	2	UHMW BUMPER
5	22598100	1	LATCH CHAIN
6	75085162	12	LOCK NUT, 1/2-13, NYLON
7	75088056	12	FLAT WASHER, 1/2" X 1-3/8"OD X .109THK
8	7500010-41	14	HEX BOLT, 1/2-13 X 1.5, GR 5
9	75085188	1	3/8-16 NUT, CENTERLOCK
10	75088053	1	FLAT WASHER, 3/8" X 1"OD X .083THK
11	75086882	10	BUTTON HEAD, 3/8-16X3/4

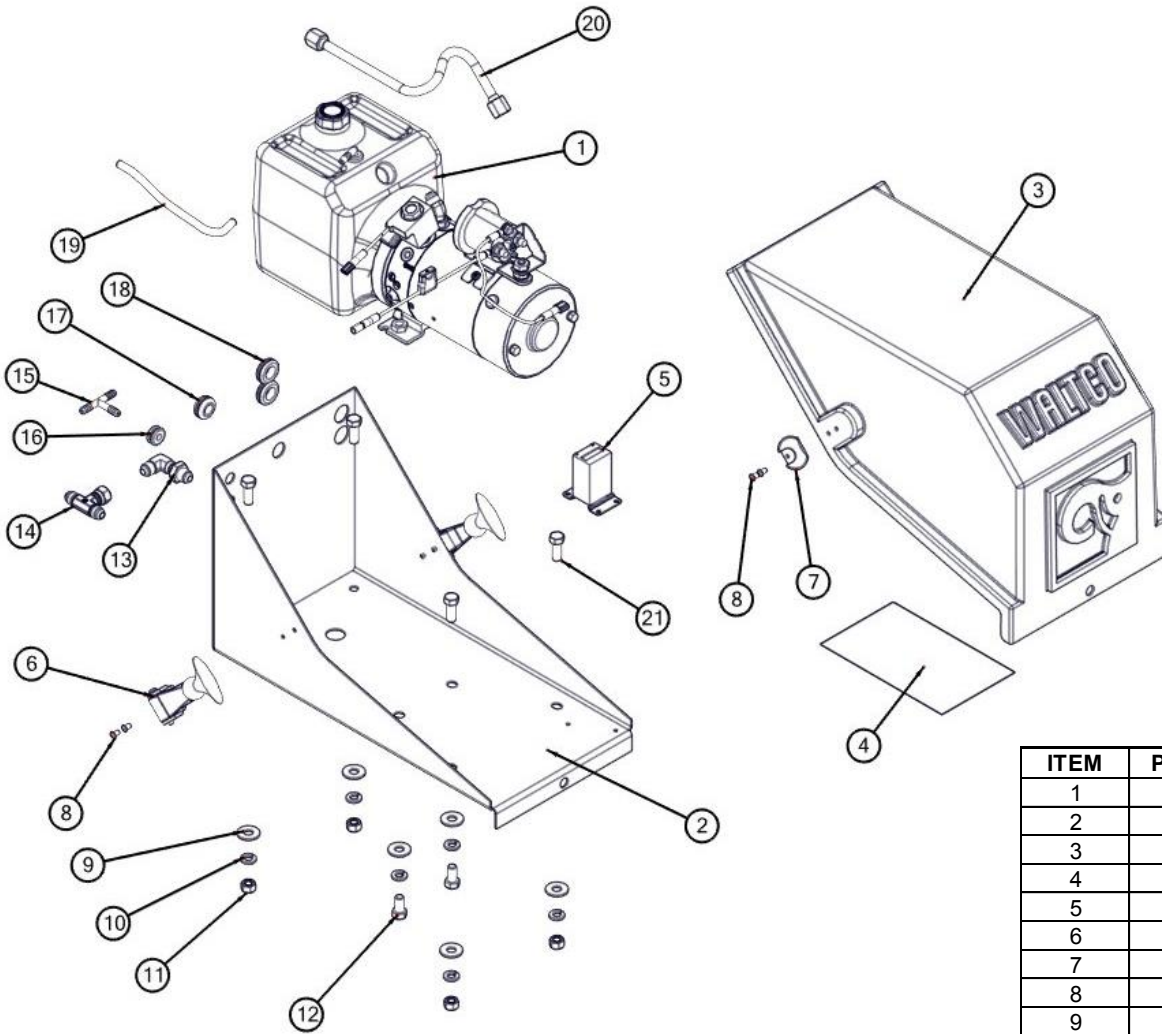


BED EXTENSION ASSEMBLY

ITEM	PART NUMBER	QTY	DESCRIPTION
1	21680010	2	CYLINDER
2	1000021-19	2	PIN WELDMENT 1 DIA X 2.56
3	75086055	4	HEX BOLT, 3/8-16 X .75, GR 5
4	75088081	4	LOCK WASHER, 3/8"
5	75088053	2	FLAT WASHER, 3/8" X 1"OD X .083THK
6	1000021-18	2	PIN WELDMENT 1 DIA X 5.5
7	21699004	4	BUSHING,FIBERGLIDE,1"ID X1"
8	75082742	2	ELBOW, 90, BARBED, 3/8 NPTM X 1/4 BARB
9	75082869	2	ELBOW, 90, #6 JIC M X #6 SAE-ORB M
10	7500017-18	1	HOSE, 100R17, 1/4" X 40"
11	7500017-17	1	HOSE, 100R17, 1/4" X 92"
12	75083139	1	TUBE, FLEX PVC, 1/4" X 82"
13	75083138	1	TUBE, FLEX PVC, 1/4" X 30"
14	70430590	1	PUMP UNIT, WFL
15	70400002	1	RESERVOIR CLAMP
16	70401513	1	HYDRAULIC RESERVOIR
17	70092503	1	VALVE, 2 WAY, 2 POS, W/ COIL
18	80001065	1	MOTOR SOLENOID
19	70091734	1	BREATHER



HYDRUALIC LAYOUT



PUMPBOX COMPONENTS

ITEM	PART NUMBER	QTY	DESCRIPTION
1	70430590	1	PUMP UNIT, WFL
2	21691103	1	WFL PUMP BOX BASE
3	22793010	1	PUMP ENCLOSURE COVER
4	80101637	1	DECAL, SCHEMATICS
5	80001312	1	CYCLE COUNTER
6	27391301	2	LATCH HANDLE ASSEMBLY
7	27391301	2	DRAW LATCH, RETAINER HALF
8	75089447	8	RIVET, BLIND
9	75088053	6	FLAT WASHER, 3/8" X 1"OD X .083THK
10	75088081	6	LOCK WASHER, 3/8"
11	75085096	6	HEX NUT, 3/8-16, GR 2
12	75086055	2	HEX BOLT, 3/8-16 X .75, GR 5
13	75082894	1	BULKHEAD, ELBOW, 90, #6 JIC, WITH NUT
14	7500081-1	1	TEE, #6M X #6M X #6F SWIVEL BRANCH 6 S6X
15	75082744	1	BARBED FITTING, 1/4"
16	75089322	1	GROMMET, 5/16" ID
17	75089329	1	GROMMET, 1/2"
18	7500072-1	2	GROMMET, HOLE .625 ID, FOR 7/8" HOLE
19	7500017-19	1	HOSE, 100R17, 1/4" X 9"
20	21691090	1	HARDLINE
21	75086056	4	HEX BOLT, 3/8-16 X 1.0, GR 5



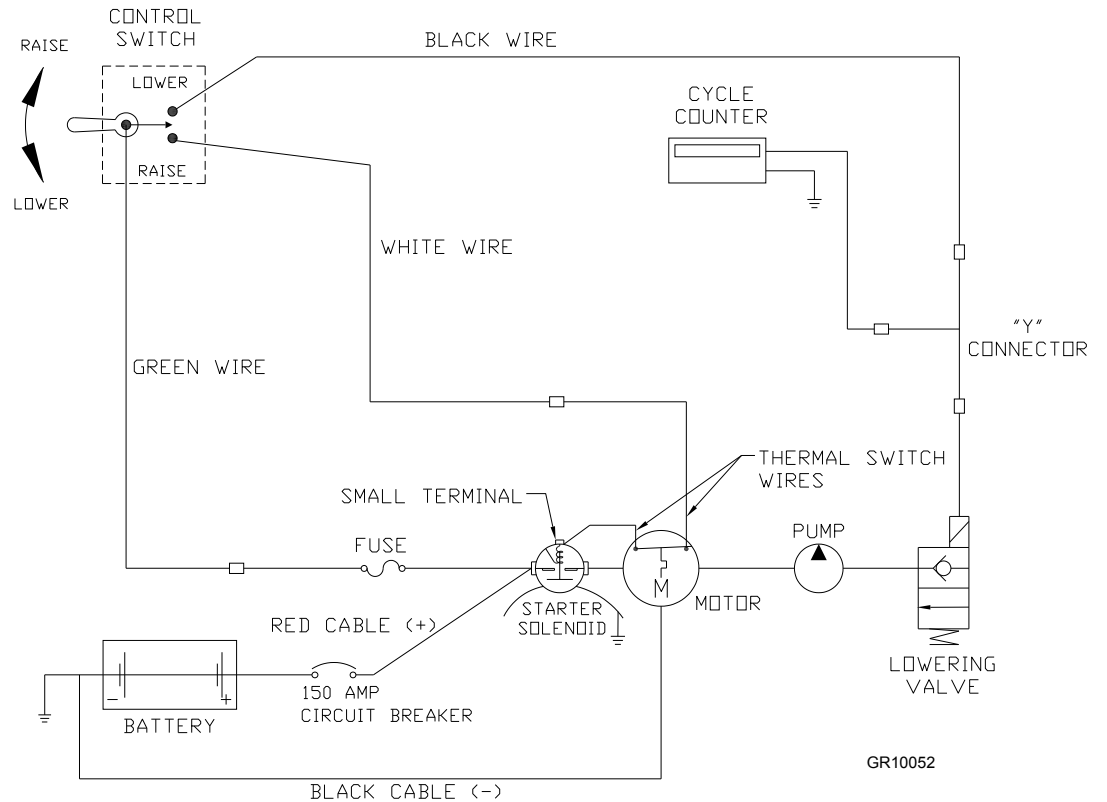
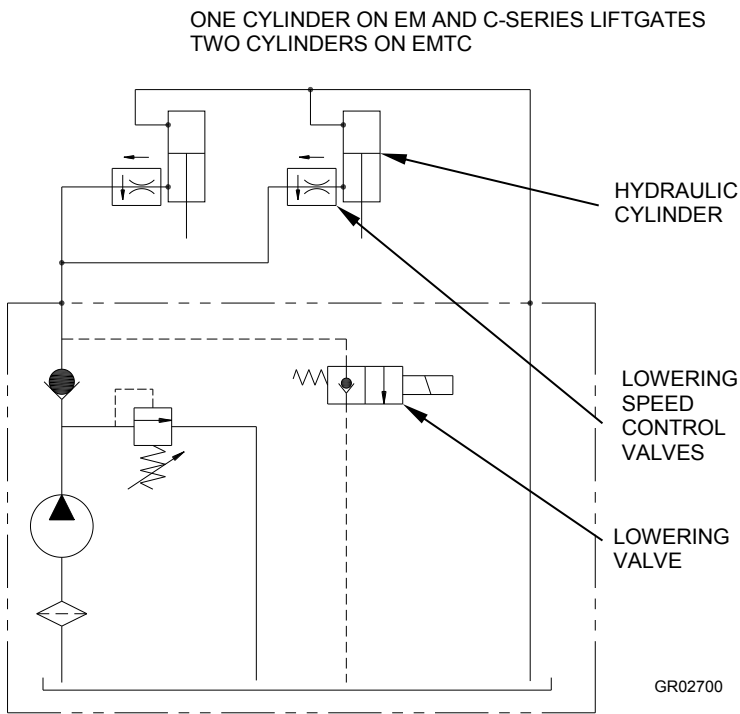
LIFT CORP.

WFL-25, -33

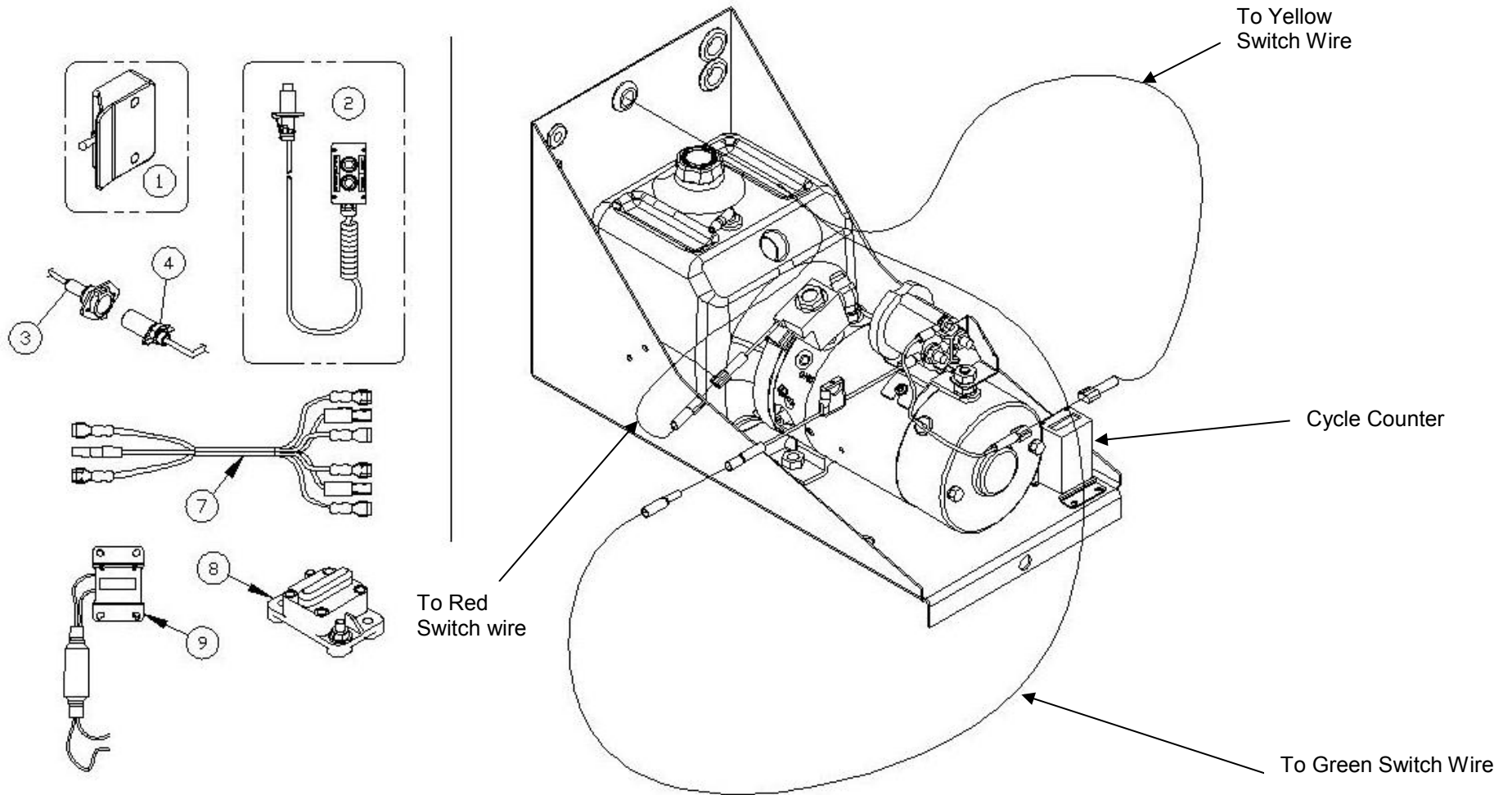
REVISED: 9-2016
E.O. 7869C
REV. 01

ITEM	PART NUMBER	QTY	DESCRIPTION
1	80001429	1	Switch Kit w/10ft Cord
2	10099325 ^a	1	Switch (Hand Held Remote)
3	75082038	1	Trailer Socket
4	75082037	1	Trailer Plug
5	75089854	1	15 Amp Fuse
6	10099309	1	Fuse Holder
7	10098413	1	Dual Control Harness
8	75089243	1	150 Amp Circuit Breaker (Manual Reset)
9	80001312	1	Cycle Counter Kit

^a Included in Switch Hand Held Remote Kit 80000430.



ELECTRIC CONTROL OPTIONS – Gravity Down



IMPORTANT

WARNING

Improper operation and maintenance of this liftgate could result in severe personal injury or death.

Read and understand the contents of liftgate Owner's manual and all warning and operation decals before operating and/or performing maintenance on this liftgate.

For SAFETY information on this liftgate see Chapter 1 of Owner's manual